



TAGlines

Summer 2013

Executive Director
Diane L. Bares

President
Shelley Holtzman

Chair
Ilene Silberstein

Vice President
Ellen Hallie Schiff

Treasurer
Aleta Crawford

Secretary
Randy E. Kraft

Education
Elaine Cook

Membership
Diane L. Bares

PR/Marketing
Piper R. Lyman

Webmaster
Jane Scal
Ilene Silberstein

Newsletter
Susan Herbst

Board of Directors
Diane L. Bares
Elaine Cook
Aleta Crawford
Kathy D'Amato-Smith
Ivan Frisch
William Heapps
Susan Herbst
Shelley Holtzman
Randy E. Kraft
Bruce Laird
Piper R. Lyman
Carol Schepp
Ellen Hallie Schiff
Ilene Silberstein

The Art Guild
of Port Washington, Inc.
200 Port Washington Blvd.
Manhasset, NY 11030
(516) 304-5797
www.TheArtGuild.org

A Not for Profit
501(c)3 Corporation



Message from the President and Executive Director

The new news is that The Art Guild renewed its five year U&O permit with Nassau County and we are trying to move forward with installation of the Fire Safety System. At this time, our plans previously submitted to the Fire Marshall's office were not approved because the tenant side of the building must be fully alarmed as well. One step forward, two steps back... We are anxiously waiting for the final plans to be submitted and approved so that installation can begin. Once the system is hooked up to the county's central system, we will be back on track!

One other hitch...the boiler at Elderfields finally went kaput last February. Following three very cold months this winter and spring, we are now waiting for the County to install a new one, which we've been told is on order. The good news is that the A/C is working this summer.

Overall, things are looking up and we are hopeful that one day soon we will be able to resume all activities. In the meanwhile here's what's been going on.

On Saturday, May 11, The Art Guild participated in PortFest, a music and arts community festival held at Schreiber High School. We ran a button making booth where children of all ages created small magic marker masterpieces that were transformed into buttons. It was a huge success as always.

The 8th Annual Art in the Park at Harbor-

Fest was held on Sunday, June 2. This year artists had the opportunity to set up display booths or rent 6 feet of snow fencing to exhibit their artwork for the day. The art fence was a worthwhile addition. We also offered free workshops and yes...button making again.

On July 14, The Art Guild hosted its first PaintFest at Elderfields. Those who attended enthusiastically felt that another PaintFest should be scheduled for the near future.

In September The Art Guild will host nationally known artist and instructor, Doug Dawson, who will give two workshops for pastelists and oil painters at Elderfields Preserve. Plein Air Landscape Painting will be held September 19, 20, 21 and Capturing the Character: Head & Shoulders will be held on September 22. A Pastel Demo will take place on Wednesday evening, September 18 from 7 - 9 PM at Elderfields.

This fall The Art Guild's annual Members Showcase Exhibit will be held October 3-27 at the Graphic Eye Gallery in Port Washington. This exhibit will be in place of the originally scheduled Works'13 exhibit which will not be held this year. Another exhibit opportunity for members will be a small works show to be held at the Atria in Roslyn. Watch for details and registration forms to come.

Hope to see you soon!

- Shelley & Diane

WORKS '12

@ THE GRAPHIC EYE GALLERY

The Art Guild held its annual member group show, Works '12 at the Graphic Eye Gallery, 402 Main St. in Port Washington, August 30 - September 30. Eighteen artists exhibited original works done in a variety of styles and media including collage, digital art, drawing, mixed media, painting, photography and sculpture.

A reception for the artists was held on Saturday, September 8. The following artists participated: Diane L. Bares, Aleta Crawford, Ivan Frisch, Frederick Giner Jr., William Heapps, Shelley Holtzman, Randy E. Kraft, Milt Masur, Aija Meisters, Joel S. Meltzer, Will Rubenstein, Ellen Savran, Ellen Hallie Schiff, Jose Seligson, Barbara L. Spivak, Marcia Weisman, Craig Werle, and Kathleen West.



The Art Guild's 3rd Annual Nassau County High School Senior Scholarship - Pursuing the Visual Arts

This year The Art Guild selected four graduating seniors to receive an award from its 2013 High School Student Scholarship Fund. This scholarship is given to students, who, based on submission of an application to the Guild with images of their artwork, demonstrated a high level of achievement in, and commitment to, the visual arts. Applications for the scholarships included drawings, paintings, sculptures, fashion designs, and photography.

The Art Guild is pleased to announce this year's recipients: Ta-Shea Brown, Sewanhaka High School, Floral Park; Ashley McCaffrey, Bethpage High School; Min Jung Son, St. Mary's High School, Manhasset; and Joanna Sugar, Oyster Bay High School. Each student received a scholarship in the amount of \$300.00.

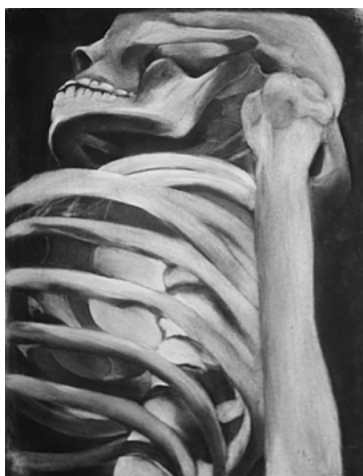
Clockwise from right:

Joanna Sugar, European Torte, Graphite

Ashley McCaffrey, Hidden, Oil

Min Jung Son, Pressure, Acrylic

Ta-Shea Brown, Skeleton in the Closet, Graphite



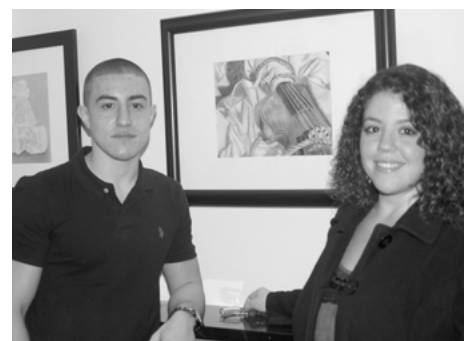


The 2012 Nassau County High School Student Juried Art Competition & Exhibition was held November 28 - December 31, 2012, at the Tilles Center for the Performing Arts at Long Island University, C.W. Post in Brookville. The artists' reception and awards ceremony was held on Friday, December 7 in the Patron's Lounge at the Tilles Center. Art Guild member, Piper Lyman, chaired the exhibit with award winning New York City artist and instructor, Margaret Zox Brown, serving as juror for awards.

First Prize was awarded to Amanda Mienko (Our Lady of Mercy Academy) for her graphite drawing, "Ice Cream" (photo top left, Margaret Zox Brown, Amanda and Piper Lyman). Second place was awarded to Matuesz Piekut's



(Valley Stream North High School), colored pencil drawing entitled "Tic Tacs" (top right) The acrylic painting, "Burger and Heart" by Christopher Goh (Schreiber High School) received third place (photo above left). Honorable mentions were awarded to Raquel Hazell (Valley Stream North High School) (above right); Steven Glibbery (H. Frank Carey High School) (right); and Kurtis Bassmann (Wheatley School).



ART IN THE PARK AT HARBORFEST

The 8th Annual Art in the Park was held during HarborFest on Sunday, June 2 from 10:00 AM to 5:00 PM at Sunset Park located adjacent to the Town Dock in Port Washington. The Art Guild offered two free workshops: "Fun with Clay," and "Plein Air (Outdoor) Painting." The workshops were well attended with over 20 lbs of clay transformed by eager students into painted fish and 50 paintings done by workshop attendees. Button making for all ages was available throughout the day. All materials were donated by The Art Guild.

In addition to the art workshops, local artists exhibited their work at this outdoor venue. This year, artists were able to rent a 10 x 10 foot space or 6 linear feet of show fencing.

A special thanks to those who helped out: Diane Bares, Kathy D'Amato-Smith, Sue Herbst, Kate Hill, Shelley Holtzman, Jane Scal and Ilene Silberstein.



PORTFEST - MAY 11, 2013



Thank you to Diane Bares, Shelley Holtzman (above) and Ilene Silberstein for representing The Art Guild at PortFest - a fun family festival held at the Schreiber High School.

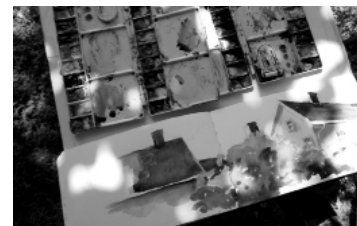
**Show Everyone
That You're
An Art Lover!
Tanks & Tshirts
for \$25**



PAINTFEST AT ELDERFIELDS



On a hot July day, a small group of painters got together to hold our first successful PaintFest! We are looking forward to getting together again! Join us on Sunday August 18 at 10 am. (See below for details.)



SAVE THE DATE

PaintFest - Sun. Aug. 18, 10 AM - 4 PM. All are invited to participate in a plein air painting day at Elderfields. Enjoy the camaraderie, share ideas and if desired, participate in a group critique. Bring your own art supplies, lunch and snacks. Cold beverages will be supplied. We have a few easels available if you arrange with us beforehand. Please call or email to RSVP.

The Art Guild's Annual Members Showcase Exhibit - Oct. 3 - 27. Graphic Eye Gallery, Port Washington. This exhibit will be open to all current members of The Art Guild. Watch for details and information.

Annual Membership Meeting, Tues. Oct. 22, 7 PM Hagedorn Room, Port Washington Public Library

The Art Guild's Nassau County High School Student Competition & Exhibition, May 7 - June 10, 2014, Tilles Center for Performing Arts. This exhibit is open to all high school students who attend school in Nassau County. Details to come.

For more information on these events, please call 516-304-5797 or email info@TheArtGuild.org

DOUG DAWSON WORKSHOPS IN SEPTEMBER

Nationally known artist and teacher, **Doug Dawson PSA Master Pastelist & Oil Painter** will give two workshops at **Elderfields Preserve**. Mr. Dawson is known for his masterful landscapes, cityscapes and figures. His award-winning works reflect the diverse interests of this articulate, philosophical and sentimental artist. For information on Mr. Dawson visit www.DougDawsonArtist.com. To register or for more information visit our website, www.theartguild.org, call 516 304-5797 or email info@theartguild.org

3 DAYS - SEPTEMBER 19, 20, 21 9:30 am - 4:30 pm
Plein Air Landscape for PASTEL or OIL PAINT
Combination Plein Air & Studio

Day One The workshop begins with a 1 1/2 hour landscape demonstration* on location (or photo reference in inclement weather). Topics will include: separating landscape into planes; massing shapes; principles used to create the illusion of depth; how to select colors for an under-painting; creating color harmony; finding color solutions; and using edges to create texture. In the afternoon students work on their paintings. The day ends with a critique.

Day Two Class begins with a one hour demonstration* and discussion on how to use thumbnail sketches to solve problems of composition and color. The remainder of the morning students will do thumbnail sketches. In the afternoon, students enlarge their best thumbnail into a painting. The day ends with a critique.

Day Three Mr. Dawson will give a 1 1/2 hour demonstration* on the use of warm colors to control the greens in a landscape. Dawson will talk about the general principles used to find color solutions. Students spend the rest of the morning and afternoon working on their own paintings.

1 DAY - SEPTEMBER 22 9:30 am - 4:30 pm
Head & Shoulders for PASTEL or OIL PAINT
Capturing the Character *with clothed models*

The workshop is open to all painters beginning to advanced. We will explore color, design, solutions for backgrounds, types of lighting, and solutions for painting the features of the face. Dawson will give a 2 to 3 hour demonstration of pastel painting working from the model. He will talk about the proportions of the face, and share observations about painting the features of the face. A description will be given of how to find color solutions while you are painting.

Students spend the afternoon working from the model. Dawson will go from student to student offering help and answering questions. At the end of the day, the four different approaches to solving background problems will be discussed.

BONUS PASTEL DEMO
WEDNESDAY, SEPTEMBER 18 7 - 9 pm
Painting a Character Study

\$20 per person • Free for students enrolled in workshops

**Please note: Demonstrations will be done using pastel.*

MEMBERS' NEWS

Dafna Adler, Heidi Block, Ivan Frisch, Maxine Geller, Shelley Holtzman, Randy Kraft, Linda Ruden, Jane Scal, Ellen Hallie Schiff, Hazel Silverberg, Pam Tarica, Margo Vignola, Marcia Weissman, and Nina Wolf have work on exhibit in July at the Artist's Studio Art School at Chelsea Mansion in East Norwich

Ginger Balizer-Hendler exhibited in a group show Sept. 22 - Oct. 5, 2012 at The Lavendar Gallery, Sea Cliff.

Ginger Balizer-Hendler, Shula Mustacchi, Stephanie Navon Jacobson and Bert Taffet exhibited in Collage, Mixed Media and Some Assemblage, Oct. 6- Nov. 28, 2012, at the Manhasset Library.

Shelley Berkeley exhibited at NAL 82nd Fall Membership Exhibition, Oct. 29 - Dec. 1, 2012, National Art League, Douglaston. She exhibited at Celebration of the Arts at the Castle, Bayside Historical Society at the Castle on Fort Totten, Bayside. From March 31 - May 1, 2013 she had a One Woman Show of 30-40 original paintings, at Unitarian Universalist Congregational of Shelter Rock Art Gallery, Manhasset.

Shelley Berkeley, Maxine Geller, and Nina Wolf exhibited in a Group Show, December 2012 at the Jericho Library, Jericho

Shelley Berkeley and Barbara Stein exhibited with the Manhasset Art Association's (MAA) Winter Art Exhibit, December 2013. Shelter Rock Library, Albertson

Edith Rae Brown had a one-woman exhibit, "So Much to Express," Nov. 1 - 29, 2012, Jericho Library Gallery, Jericho, Edith showed her work with Audubon Artists online at www.audubonartist.org, Oct. 8 - Dec. 31, 2012 and her work was included in Allied Artists of America at The National Arts Club Nov. 9 - 18, 2012. Her painting, My Place #1, was included in 114th Annual Exhibiting Artist Members' Exhibition March/April 2013, The National Arts Club, NYC.

Aleta Crawford, Myra Fox, Linda Ruden and Ellen Savran were accepted into the juried exhibition, "Spiritually, the Self, Nature & Community," Jan. 6 - Apr. 15, 2013. Sid Jacobson Jewish Community Center, East Hills. Aleta's piece was chosen as one of the prize winners.

Aleta Crawford and Barbara Stein showed work in the Huntington Art Council's Still Life Exhibit, Dec. 7, 2012 - Jan. 28, 2013, Huntington.

Portraits of Women by **Diana DeSantis** are on view at Bayside Historical Society in March 2013, in celebration of Women's History Month. Fort Totten, Bayside, www.baysidehistorical.org

Works by **Diana DeSantis, Madeline Meryash and Hazel Silverberg** were accepted to the American Artists Professional League's 84th Grand National Exhibition online Oct. 6 - Dec. 30, 2012 www.AmericanArtistsProfessionalLeague.org

Works by **Virginia Edele, Nancy Fabrizio, Vivian Hershfield, Suzanne McVetty, and Grace Su** were included in the group exhibit, "Journeys and Destinations" Feb. 2013, at the Main Street Petite Gallery, Huntington Arts Council, Huntington, NY

Nancy Fabrizio and Arlene Fiorella had works included in the Tricounty Artists of Long Island's Twenty-Fifth Invitational Fine Arts Exhibit, Nov. 11 - Dec. 14, 2012, at Wisser Memorial Library, NY Institute of Technology, Old Westbury Campus

Nancy Fabrizio, R. Linda Levy, Milt Masur, Ellen Savran, Bob Stuhmer and Grace Su had works included in the exhibit, Life Around Us, Aug. 19 -Sept. 21, 2012 at My Studio, Port Washington.

Raymond Gomez's work was included in the group show, Structure, Space & Form - A Systematic View of a Whole Sept. 28 - Oct. 14, 2012, Remsenburg Academy, Remsenburg.

Susan Herbst had two paintings in the Islip Arts Council's 29th Annual Juried Art Show Sept 22-30, 2012, at the Carriage House, Bayard Cutting Arboretum, Oakdale. She will have two paintings in the Fire Island Lighthouse Preservation Society's 12th annual Art Show June 27 - July 18, 2013.

Susan Herbst, Randy Kraft and Elaine Walden had paintings included in the Places & Things Around Me show April - May 2013 at The Creative Arts Studio, Sea Cliff

Sandy Hyman, Barbara Spivak, and David Wollin had their photographs featured in: Port Washington, The Music and Images Show, Sept. 20, 2012 at PW Public Library. Created by The Photography Club of LI, the show was a grand celebration of life in Port and featured a special tribute to the Library's 120th year.

Bruce Laird, All New Work - Paintings, Collage, Photographs and Mixed Media were exhibited Oct. 30 - Nov. 24, 2012 at NoHo Gallery, NYC. He also had a painting accepted into an International juried show in Harrisburg, Pa.

Milt Masur had a solo show in Jan. 2013 at the Hicksville Library. Milt had a painting in a show at the Great Neck Library in Dec. 2012, and his piece "Horizons," was in the exhibit, Embracing Our Differences: A Retrospective 2007-2012, Sept. - Oct. 2012, Barnes & Noble, Manhasset. His paintings were on view at the Great Neck Arts Center and at The National Art League's Open exhibition. His work is part of an exhibit "Power and Wonder," in June, at the b.j. spoke gallery in Huntington.

Madeline Meryash exhibited at the Cow Neck Peninsula Historical Society's Country Fair, Sept. 22, 2012 at Sands-Willet House, Port Washington.

Shula Mustacchi has work in the group exhibit Artist Craftsmen of New York Oct. 2 - 13, 2012, The New Century Artists Gallery, NYC

Stephanie Navon-Jacobson's work was included in a group show at the Alfred Von Loen Gallery, South Huntington Public Library, Huntington Station.

Ann Pellaton exhibited watercolors and collages in "Together Again," March/April 2013, Graphic Eye Gallery, Port Washington.

Doris Roberts exhibited two paintings in the MAA show March/April, 2013, Trapani Art & Frame, Manhasset.

Linda Ruden and Ellen Hallie Schiff will be showing their work in the Critique Group of Long Island's group exhibition, "The Next Level," Aug. 28-Oct. 28, 2013 at the Bryant Library in Roslyn. Artists' reception, Sept. 20, 7 - 9 PM.

Ellen Hallie Schiff's work was included in the three-person show, Depth of Expression, Aug. 26 - Jan. 6, 2013, Omni Gallery, Uniondale; Recent Works on Paper at Philadelphia International Institute and PII Gallery, March 1 - March 30, 2013, www.piigallery.com; A Solo Exhibit of works June 11 - August 18, 2013, The Bryant Library, 2 Paper Mill Road, Roslyn. ellenhallieschiff.com

Roberta Seid has two pieces in The Great Neck Arts Center show, March 2013.

Jose Seligson's work is featured in *Water Color, Paintings by Contemporary Artists*, with and introduction by Leslie Dutcher. The book is available through Chroniclebooks.com

Barbara Silbert won an Honorable Mention at the National Art League's "In A Child's World" exhibit March/April 2013. She also exhibited two small landscape paintings at Trapani Art & Frame, Manhasset

Barbara Lewis Spivak's photographs of the Port Washington train station from her Loco-Motion series, were featured in a limited edition at the Grand Opening Gala of Laurie Scheinman's Wit and Whim, Sept. 28, 2012, Port Washington. Profits from the sale of the limited edition photographs will be donated to HEARTSPW (Helping Enrich Arts Education in Port Washington Schools)

Barbara Lewis Spivak and David Wollin had works included in the photography exhibit, Boundaries, at the Manhasset Public Library, Manhasset NY

Barbara Stein exhibited paintings and pastels, October 1-31, 2012 at the Dolphin Cafe, Port Washington; The MAA Exhibition, Trapani Art and Frame; and 56th Exhibition of LI Artists, Art League of LI, through April 14.

Tani Waheed exhibited her artwork April 6, at Evergreen & Co. Salon, Port Washington.

David Wollin's photo, "Mating Dance," was selected as PCLI's Photo of the Month and appeared in the Dec. 28, 2012 issue of the *Port Washington News*. His work has been included in the these shows: The Manhasset Art Association exhibit at Trapani Fine Art & Frame, Manhasset, March/April 2013. MAA exhibit, "The Spring Show" at Jericho Public Library, May; Photography Club of LI Annual Exhibit at PW Library, May 1 - June 30; June 2 - July 7, Art League of LI, "Structure: Within and Beyond"; June 2- August 2, 2013 - Manhasset Library, "America the Beautiful"; June 2013 - The Graphic Eye Gallery, Port Washington, "Art-O-Rama"; PW Library, "Photography Club of LI Annual Music and Images Show"



The Art Guild
of Port Washington, Inc.
200 Port Washington Blvd.
Manhasset, NY 11030

516.304.5797

Summer 2013

Non-Profit Org
US Postage
PAID
Port Washington, NY
Permit No. 7

www.TheArtGuild.org

Visit our website to view

- calendar of events
- art class schedules
- news about recent happenings
- award winners
- art shows
- downloadable applications
- links to member artists' websites



Like us on Facebook

facebook.com/TheArtGuild

BECOME A MEMBER OF THE ART GUILD

ANNUAL MEMBERSHIP APPLICATION JANUARY 1 - DECEMBER 31

☐ **NEW MEMBER** ☐ **RENEWAL**

☐ **Individual** (\$45) Single Membership

☐ **Student** (\$30) Individual full-time student (up to age 22)

☐ **Senior** (\$30) Age 65+

☐ **Family** (\$55) A group of people living in the same household.

Includes one vote per family

☐ **Friend** (\$75) Individuals or businesses that wish to support TAG

☐ **Sponsor** (\$150) Individuals or businesses that wish to support TAG

☐ **Patron** (\$500+) Individuals or businesses that wish to support TAG

☐ **If your company has a matching gift program please
remember The Art Guild**

Name _____ DOB (if under 18) _____

Parent(s) Name(s) (if student is under 18) _____

Address _____

City _____ State _____ Zip _____

Home Phone () _____ Cell Phone () _____

E-mail (Parent email if student is under 18) _____

Signature _____ **Date** _____

Please send Check payable to: The Art Guild of Port Washington, Inc., 200 Port Washington Blvd., Manhasset, NY 11030, or join online at www.TheArtGuild.org.