



# TAGlines

Winter 2016

## Executive Director

Diane L. Bares

## Associate Executive Director

Susan Herbst

## Co-Presidents

Shelley Holtzman

Ilene Silberstein

## Vice President

Ellen Hallie Schiff

## Treasurer

Aleta Crawford

## Secretary

Randy E. Kraft

## Education

Elaine Cook

## Membership

Diane L. Bares

## PR/Marketing/Newsletter

Susan Herbst

## Webmaster

Susan Herbst

## Board of Directors

Diane L. Bares

Frank Burke

Elaine Cook

Aleta Crawford

Kathy D'Amato-Smith

Ivan Frisch

William Heapps

Susan Herbst

Shelley Holtzman

Randy E. Kraft

Bruce Laird

Piper R. Lyman

Carol Schepp

Ellen Hallie Schiff

Ilene Silberstein

## The Art Guild

of Port Washington, Inc.

200 Port Washington Blvd.

Manhasset, NY 11030

(516) 304-5797

[www.TheArtGuild.org](http://www.TheArtGuild.org)

A Not for Profit

501(c)3 Corporation

## Message from the Co-Presidents

The holiday season has passed and along with it another year. The Art Guild hopes you have participated in or enjoyed an activity with us during this past year.

Our emphasis for 2015 was to re-establish **The Art Guild Education Program** for children and adults. We are happy to say that we have been successful and we look to expanding our schedule next year with additional class offerings.

Our second focus was to schedule a full year of **Art Exhibits in our gallery**. Artists from Long Island and beyond participated in nine shows including a show featuring Nassau County high school students. These exhibits were open to artists working in a wide variety of mediums including painting, collage, photography, sculpture and more.

### Some highlights from our 2015 programming:

- A community program, **CreArtive** was a day of free, fun art workshops at Elderfields for children ages 5 to 13 and their families.
- We continued to partner with **Martin Viette's Education Program** for **PaintFest** where artists are invited to paint at the beautiful, verdant nursery once a month.
- Members painted planters for the **Plant a Row for the Hungry** campaign.
- Three **Scholarships** were awarded to high school students who planned to pursue the visual arts following graduation.
- We added **Sip & Sketch**, monthly life draw-



ing sessions, to our evening activities for artists of all levels. (Details on page 5.)

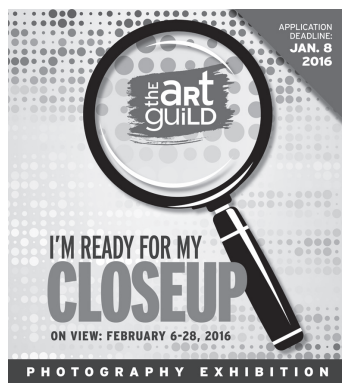
- We hosted **Art Workshops** taught by nationally known artists.
- At **Art In The Park at HarborFest** we offered free art workshops giving area residents, young and old, a chance to experience the creative process while participating in the visual arts.
- The **Port to Port Art Exchange Exhibit** was a unique Nassau/Suffolk gallery art swap with the Greater Northern Brookhaven and Port Jefferson Arts Council.

Our board is always interested in your thoughts and ideas - stop by, email or pick up the phone. We hope to see you during 2016.

We wish you an artistic, happy and healthy New Year,

Shelley & Ilene  
Co-Presidents

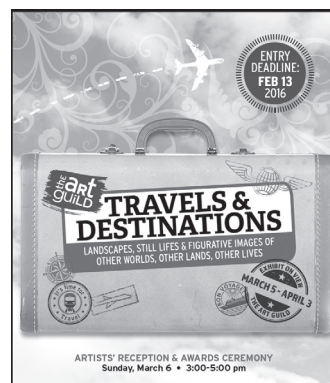
## UPCOMING EXHIBITS



### I'M READY FOR MY CLOSE UP: PHOTOGRAPHY EXHIBIT FEBRUARY 6 - 28

Reception:  
February 7, 3-5 pm

Portraits, macros, and closeups that "speak to the viewer."  
Juror: Harold Naideau is a photographer, artist, author and educator based on Long Island.



### TRAVELS & DESTINATIONS: NEAR & FAR MARCH 5 - APRIL 3 Call for Artists Deadline: February 13 Reception: March 6, 3-5 pm

Show us where you've been - near, far and far-out! (See more details on page 5.)

For a complete gallery schedule go to page 5 or visit our website, [www.theartguild.org](http://www.theartguild.org).

## 2015 MEMBERS SHOWCASE



*Diane Bares, Executive Director; Eileen Neville, recipient of the Terri Shkuda Award; Kathy Shkuda; Shelley Holtzman, Co-President; Delia DeRiggi-Whitton, Nassau County Legislator; Ilene Silberstein, Co-President.*

After the bitter cold winter of 2015, full of snow and ice and more ice and snow, it was a refreshing change to fling open the doors of Elderfields and welcome members, friends and family to the 2015 Members Showcase on May 17.

Guests were treated to a Garden Party Reception on Elderfields' sunny patio, complete with live music by Chris Kinnear. In addition to announcing the awards for the exhibit, the **Terri Shkuda Award for Broadening Creative Pursuits** was awarded to founding member, **Eileen Shea Neville**.

Gregg Kreutz (who in September gave a workshop on The Art of Still Life) was the juror of awards. He commented that it

was difficult to choose a winner from such an outstanding group.

First Place was awarded to **Frances Ianarella** for her oil painting "Pussy Willows in a Ginger Jar" (left), Second Place was awarded to **Margo Vignola** for her oil painting, "Patagonia" (bottom left), and Third Place was awarded to **Annette Priomos** for her oil painting, "Recycled." Honorable Mentions went to Diane Kaufmann for her pastel painting, "Idyllic Crete," **John Pulinat** for his oil painting, "A Still Life with the Hurricane," and **Pam Tarica** for her oil painting, "Late Afternoon."



## PORTFEST & ART IN THE PARK



Port Washington is a community-minded town and The Art Guild participates as often as they can.

PortFest, in May, raises awareness and funds for the arts in the Port school district. Instructor Nicole Thomas and Co-President Ilene Silberstein (above left) were on hand to make buttons and talk to parents about our great programs for kids.

During Harborfest in June, The Art Guild held Art In The Park. Free art classes were offered for all ages. Instructor Kristine Rivera and Art Guild volunteers helped over 100 visitors create clay and/or painting projects. Art Guild members were able to rent snow-fence space from the Chamber for an informal art show and sale.



## CreARTive @ THE ART GUILD



*Instructor Kristine Rivera (second from the right) demonstrates simple printmaking techniques*

On August 22, over 30 children plus their parents and grandparents visited Elderfields' backyard for the first CreARTive afternoon at the Art Guild.

A variety of creative activities - hand-building with clay, printmaking, tie-dying, collage, sketching, and of course button-making - were available at various stations. Parents were able to meet instructors Nicole Thomas and Kristine Rivera, as well as tour the facilities, take a chance on a raffle (a tote bag full of art supplies & a TAG gift certificate), and learn about fall classes.

We'd like to say THANK YOU to all of our volunteers and teachers! We have lots of ideas and look forward to growing this fun event in 2016!



## AN INTERNAL AFFAIR



In July and August, The Art Guild held a pop-up exhibit "An Internal Affair" featuring the work of the Guild's instructors, studio artists and board members. The show was a way to say "thank you" to all the people behind the scenes, whose hard work and dedication helped us get back on our feet this past year.



The Art Guild thanks

*Martin Viette*  
NURSERIES

6050 Northern Blvd.  
East Norwich, NY 11732  
516-922-5530

For allowing us to paint on  
their beautiful grounds all year.

## ORDINARY MADE EXTRAORDINARY: THE ART OF STILL LIFE

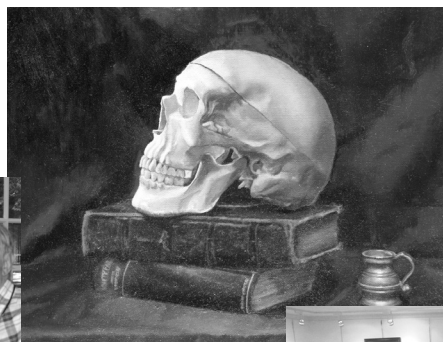
On September 11, The Art Guild invited the public to the Artists' Reception and Awards Ceremony for "Ordinary Made Extraordinary: The Art of Still Life" a Juried Competition and Exhibition. The exhibit, on view September 4- 27, showcased 32 artists and 49 artworks, exploring a wide range of vision and subject matter, transforming the ordinary into extraordinary. Many styles, from abstract to realism, and mediums including photography, oil, watercolor, pastel were represented.

The Juror-of-Awards for the show was **Leah Lopez**, (middle) a New York City artist originally from northern New Mexico. She is known for her breathtaking paintings that capture elegance and romance.

**Alan Richards** was awarded first place for his photographic composite, "People Who Live In Glass Bowls Have A Distorted Sense of Reality," (top); **Ilene Silberstein** won second place for her oil painting, "Oranges with Asian Rug," (bottom); and **Randy Kraft** was awarded third place for her watercolor, "All American." Honorable Mentions went to **Caryn Coville** for her colored pencil painting, "My Brother's Woodturnings," **William Dodge** for his oil painting, "The Morning After II," and **Frances Ianarella** for her oil painting, "White Pitcher with Fruit."



## NASSAU COUNTY HIGH SCHOOL STUDENTS EXHIBIT

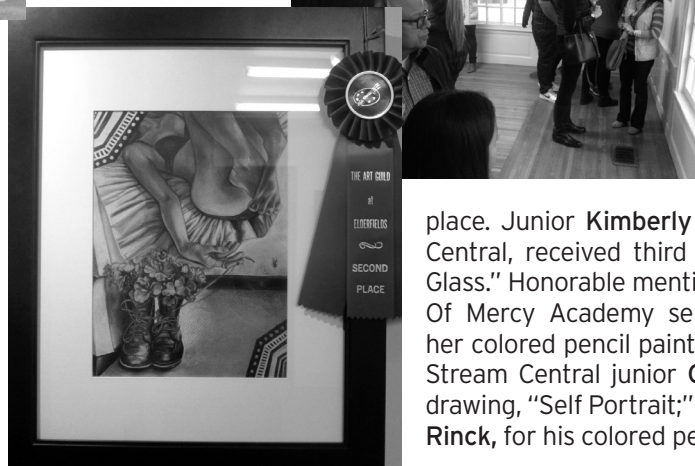


The reception and awards ceremony for the "Nassau County High School Student Juried Art Competition and Exhibition" was held on Nov. 1. The show was on view from October 31 - November 29. Thirty-five high school students in grades 9 - 12, from 13 public and private schools throughout Nassau County, exhibited 53 works.

The Juror-of-Awards for the show was artist **Bennett Horowitz**. Mr. Horowitz taught at the High School of Art & Design in Manhattan.

First place was awarded to home schooled senior **Katie Cheng**, for her oil painting, "His Words Live On" (top left). A self-portrait, "The Artist's Shoes," (bottom left) by senior **Carla Perez**, from Valley Stream North, was awarded second

place. Junior **Kimberly Rambarran**, of Valley Stream Central, received third place for her drawing "Small Glass." Honorable mentions were awarded to Our Lady Of Mercy Academy senior **Samantha Paralikas**, for her colored pencil painting, "Simple Pleasures;" Valley Stream Central junior **Cathleen Liang**, for her pencil drawing, "Self Portrait;" and Oceanside senior **Timothy Rinck**, for his colored pencil painting, "Office Stress."





## PORT TO PORT ART EXCHANGE EXHIBIT

Members of The Art Guild (TAG) and the Greater Port Jefferson Northern Brookhaven Arts Council (GPJNBAC) swapped gallery space for the first Long Island Port-to-Port Art Exchange Exhibit, from October 6 - 18. This unique joint exhibit not only offered opportunities for art lovers to see work from different communities, it allowed artists from Nassau and Suffolk to connect with each other.

The opening reception, at Elderfields, was attended by members of both organizations on Saturday, October 10. The eclectic work of members of GPJNBAC included sculpture, photographic manipulations, and ceramics as well as oil and acrylic paintings.

TAG members exhibited their varied styles - from abstract and modern, to more traditional, watercolor, oils, acrylic, and pastel, mixed media, photography, and prints at The Port Jefferson Community Center. The closing reception was on October 18, with ambient musical entertainment by Michael Smith.

We welcome our new members from GPJNBAC and look forward to working with them in the coming year.

*This event was a signature event for Long Island Arts Alliance's Arts Month in October 2015, and was sponsored by Nassau County Department of Parks, Dick Blick Art Materials, and Fern & Hersch Cohen.*

ART EXCHANGE EXHIBIT  
OCTOBER 6-18 2015



## ART FROM THE HEART - 10X10 FUNDRAISER

On December 4, artists, friends and families attended the 3rd Art From The Heart 10x10 Fundraiser. Old and new friends mingled, caught up and enjoyed cranberry sangria and a variety of hors d'oeuvres. More than 70 pieces of art were on display and on sale for \$100 each to raise money for The Art Guild's Education Fund.

In total, 35 pieces were sold throughout the duration of the exhibit which was on view through January 3, 2016.

Thank you to Frank's Pizza of Port Washington for the delicious antipasto platters.



## WORKSHOPS

**Stephanie Navon-Jacobson** taught a Silkscreen Monotype workshop on May 30 - 31. Participants created two or three mono-prints drawn or painted directly on a silkscreen, using pastels, watercolor, and water soluble crayons.



Stephanie is an instructor at St. John's and also teaches drawing at TAG on Mondays. We look forward to scheduling another workshop with Stephanie soon!

**Gregg Kreutz** taught The Art of Still Life workshop on September 19 and 20. Gregg, who also teaches at the Art Student League,



demonstrated his classic approach to painting the still life. Each participating artist had their own individually designed still life arrangement to paint. Thank you to Frances Ianarella and Ilene Silberstein for staging more than a dozen still lifes.

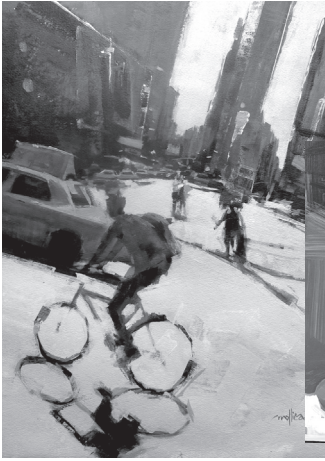
# ART CLASSES & WORKSHOPS

## WORKSHOP

### FAST, LOOSE & BOLD PAINTING WITH PATTI MOLLIKA

2-Day Workshop • February 13-14, 9:30 am - 4:30 pm

Fee: \$350 Members/\$380 Non-members



Learn to paint confidently, using brilliant color, gestural brushwork and strong compositions. You'll learn how to mix clean bright colors, create a value sketch, economize brushstrokes, simplify, start with large shapes,



work with big brushes and thick paint, and mix colorful grays to create dramatic, brilliant and confident paintings! Painting demonstrations will be in acrylics or oils, but the fundamentals taught apply to all media. A materials list will be provided. **All levels and all media are welcome.**

## CHILDREN'S CLASSES

### ART EXPLORATIONS

Ages 5-7, open to 8 students

6 Saturdays: Beginning in April

12:30-1:45 pm

Fee: \$120 M/\$150 NM

### CHILDREN'S ART STUDIO

Ages 8-12, open to 8 students.

6 Wednesdays: Beginning in April •

4-5:30 pm OR

6 Saturdays: Beginning in April •

10-11:30 am

Fee: \$120 M/\$150 NM

## ADULT CLASSES

### DRAWING: SHARPEN UP!

All Levels

Open to 8 students (adults)

Mondays: Spring 2016, call for info.

Time: TBA

Fee: \$250 M/\$280 NM

Instructor: Stephanie Navon-Jacobson

### WATERCOLOR

Intermediate and up

Open to 8 students (adults)

8 Wednesdays: Spring 2016, call for info.

9:30 am - 12:30 pm

Fee: \$320 M/\$350 NM

Instructor: Eileen Neville

### LIFE DRAWING W/NUDE MODEL

No Instruction

Open to 8 students (adults)

8 Thursdays: Spring 2016, call for info.

noon - 4 PM

Fee: \$200 M/\$230 NM

Monitor: Joyce Kubat

## OTHER OPPORTUNITIES

### PAINTFEST AT MARTIN VIETTE

Second Tuesday Mar. 8, Apr. 12,

In the greenhouse

May 10, June 9, Outdoors on the grounds

9:30 AM - 12:30 PM • FREE

Martin Viette Nurseries, 6050 Northern

Blvd, East Norwich, NY 11732. Paint

whatever you see or arrange potted plants, flowers and other items to make your own scenes or still lifes. Bring your own supplies, and snacks (no oil paint when we are indoors). Please call us or email to RSVP.



### SIP & SKETCH

Second Thursday of the Month

Feb. 11, Mar. 10, Apr. 14, May 12

6:30 - 9:30 PM • Fee: \$15 per evening

No instruction • Pay-as-you-go

Reservations a must - call or email

We provide the model - you bring your pencils, pastels, charcoal or paint. Model will take a variety of timed poses from short to long. Bring a beverage of your choice and a snack if you wish. Easels are available.

## 2016 EXHIBIT SCHEDULE

*We've planned many interesting and exciting exhibits for 2016. We hope these themes inspire you to start painting!*

### TRAVELS AND DESTINATIONS: NEAR AND FAR

March 5 - April 3

Submission deadline February 13

Juror: Paul David Elsen

Show us where you've been - near, far and far-out! Landscapes, still lifes and figurative images tell the story of our travels both real and imagined. Where have YOU been? Montauk, Maine or Mexico? We can't wait to see your travelogue.

Reception: March 6, 3-5 pm

### LINE: THROUGH THICK & THIN April 9 - May 15

Submission deadline March 18

Line is one of the basic elements in art - descriptive, implied or abstract. Bold, soft, elegant or jagged. A line defines the curve of a hip. The lines on the highway define a journey. This exhibit is open to painting, drawing, print-making, mixed media and sculpture in which the line is a dominant component.

Reception: April 10, 3-5pm

### 2016 MEMBERS SHOWCASE

May 21 - June 26

Registration deadline April 29

Open to all current TAG members, 14 years and older. One entry per member.

Reception: June 3, 6-8 pm

### FUR, FINS & FEATHERS: THE ANIMAL KINGDOM

September More TBA

### VISUAL TRICK | VISUAL TREAT

October More TBA

As we enter the mystical season of Halloween, artists are invited to submit works that "trick" or "treat" us. Trick everyone with a trompe-l'oeil or treat us to some beautiful eye candy. Don't be afraid to let your imagination conjure up something magical, supernatural or macabre!

### 2016 HIGH SCHOOL STUDENT JURIED EXHIBIT

November More TBA

### ANNUAL FUNDRAISER EXHIBIT

December More TBA

*Exhibits and dates subject to change.*





The Art Guild  
of Port Washington, Inc.  
200 Port Washington Blvd.  
Manhasset, NY 11030

516.304.5797

Winter 2016

Non-Profit Org  
US Postage  
**PAID**  
Flushing, NY  
Permit No. 1778

**www.TheArtGuild.org**

Visit our website to view

- exhibit schedule
- class & workshop schedule
- upcoming events
- news about recent happenings
- downloadable forms
- links to member artists' websites



Like us on Facebook: The Art Guild  
Follow us on Twitter: artguildpw



We offer classes for Children and Adults.  
For registration forms or more information about  
classes, visit [www.TheArtGuild.org](http://www.TheArtGuild.org), call  
516-304-5797 or email [info@TheArtGuild.org](mailto:info@TheArtGuild.org)

Do you teach? Have an idea for a class or  
workshop? Call 516-304-5797 or  
email [info@TheArtGuild.org](mailto:info@TheArtGuild.org)

## WORKSHOP REGISTRATION & MEMBERSHIP APPLICATION

Name \_\_\_\_\_ DOB (if under 18) \_\_\_\_\_

Parent(s) Name(s) (if student is under 18) \_\_\_\_\_

Address \_\_\_\_\_

City \_\_\_\_\_ State \_\_\_\_\_ Zip \_\_\_\_\_

Home Phone ( ) \_\_\_\_\_ Cell Phone ( ) \_\_\_\_\_

E-mail (Parent email if student is under 18) \_\_\_\_\_

Signature \_\_\_\_\_ Date \_\_\_\_\_

**Please send** Check payable to: The Art Guild of Port Washington, Inc., 200 Port Washington Blvd., Manhasset, NY 11030, or join online at [www.TheArtGuild.org](http://www.TheArtGuild.org).

### ADULT WORKSHOP

☐ **Fast, Bold & Loose Painting Workshop - Mollica - February 13-14 - \$350M/\$380NM**

## MEMBERSHIP 2016

BECOME A MEMBER OF THE ART GUILD & SAVE! ANNUAL MEMBERSHIP APPLICATION JAN. 1 - DEC. 31.

☐ **NEW MEMBER** ☐ **RENEWAL**

☐ **Individual** (\$45) Single Membership

☐ **Student** (\$30) Individual full-time student (up to age 22)

☐ **Senior** (\$30) Age 65+

☐ **Family** (\$55) A group of people living in the same household.  
Includes one vote per family

☐ **Friend** (\$75) Individuals or businesses that wish to support TAG

☐ **Sponsor** (\$150) Individuals or businesses that wish to support TAG

☐ **Patron** (\$500+) Individuals or businesses that wish to support TAG

☐ **If your company has a matching gift program please  
remember The Art Guild**