

JESSE LANE ONLINE WORKSHOP “Riptide” Supply List

Welcome to my workshop!

You'll need to trace or transfer the line art onto your paper before the first class. (The line art will be emailed to you.) Please size the image so it's around 15.5" x 10". (That's the size of the IMAGE on the paper. The paper itself will be larger). Using a graphite pencil, trace the lines lightly enough to be erased. (I use a Ticonderoga Black HB 2 pencil.) Your paper must be white. For this workshop, I recommend Strathmore Bristol Vellum 300.

You'll need to refer to the workbook as you draw. It's a good idea to print it out and keep it by your side.

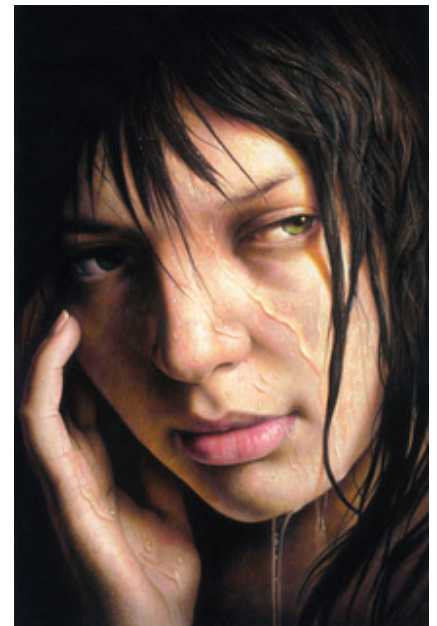
The pencils I use are Prismacolor, and I'll be referring to them using their Prismacolor names. If you're substituting with another pencil brand, it's a good idea to label each pencil with its corresponding Prismacolor name so you can find your colors easily. You can label each pencil with a piece of tape.

“DRAMATIC PORTRAITS IN COLORED PENCIL” “RIPTIDE” SUPPLY LIST

Prismacolor Premier Colored Pencils

- Black PC 935
- White PC 938
- Cream PC 914
- Beige PC 997
- Seashell Pink PC 1093
- Beige Sienna PC 1080
- Light Umber PC 941
- Dark Umber PC 947
- Peach Beige PC 1085
- Goldenrod PC 1034
- Jasmine PC 1012
- Blush Pink PC 920
- Sienna Brown PC 945
- Sandbar Brown PC 1094
- Dark Purple PC 931
- Sepia PC 948
- Ginger Root PC 1084
- Clay Rose PC 1017
- Nectar PC 1092
- Eggshell PC 140
- Dark Brown PC 946
- Lavender PC 934
- Mineral Orange PC 1033
- Bronze PC 1028
- Putty Beige PC 1083
- Warm Grey 30% PC 1052
- Warm Grey 90% PC 1058
- Deco Peach PC 1013
- Deco Pink PC 1014
- Peach 939
- Light Peach PC 927
- Salmon Pink PC 1001
- Limepeel PC 1005
- Green Ochre PC 1091
- Yellow Ochre PC 942
- Black Cherry PC 943
- Canary Yellow PC 916
- Yellowed Orange PC 942
- Pink PC 929

OUR PROJECT: “RIPTIDE”



ADDITIONAL SUPPLIES

Pencil sharpener
Battery Operated Eraser

I recommend this Derwent model: https://www.amazon.com/Derwent-Battery-Operated-Supplies-2301931/dp/B00271W9GG/ref=sr_l_3?crd=325YCICXY5JZ2&keywords=derwent+battery+operated+eraser&qid=1562701492&s=gateway&sprefix=derwent+batter+y+opera%2Caps%2C183&sr=8-3

One of the following:

X-ACTO Knife **OR** Slice Ceramic Cutter. It's \$7.50 on Amazon: https://www.amazon.com/dp/B00286KNPG/ref=em-c_b_5_i

Paper: I recommend Strathmore Bristol Vellum 300 for this workshop. You may use your favorite paper instead, but it must be **WHITE**.

Optional:

Pencil extenders, easel, Swifter duster (to wipe away particles), glassine sheets (to place under drawing hand).